



**Heavy Duty Dome Wall Mount  
w/Strut & Access Port**  
Black Finish: RVSDWM19S-DOT



**Camera Outdoor Weatherseal  
RVSCOWS** (Separate Data Sheet  
Available)



RVSWMC2000



RVSWMHD2000



**Pole Mount Adapter**  
Black Finish: RVSPMA18BS



RVSPM2010



RVSPM2000

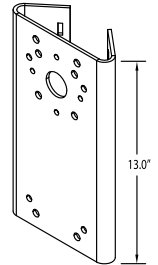
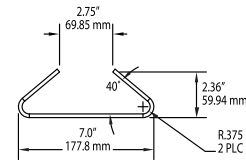
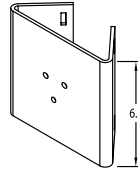
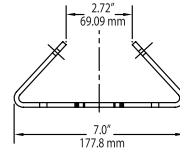
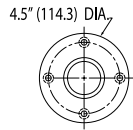
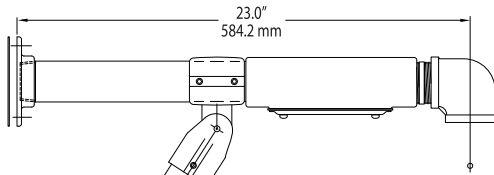
**Rooftop Mount  
RVSP351**



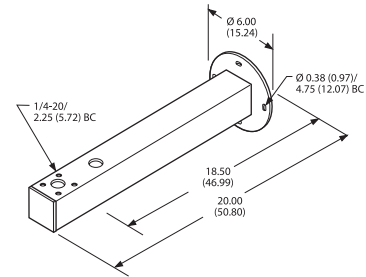
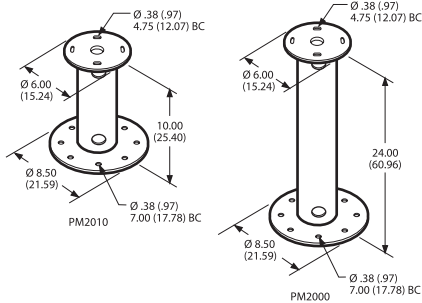
**Parapet Wall  
Mount  
RVSP350**



# Specifications

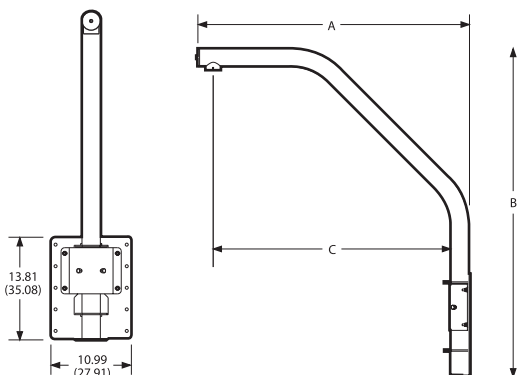


- Heavy-duty design for harsh environments
- Solid construction ensures maximum strength
- Interconnecting cabling hidden in mount - clean and free of exposed cabling
- Removable access door for simplified cable connections
- For use with small and medium outdoor pendant mount domes that use 1.5-inch NPT pipe



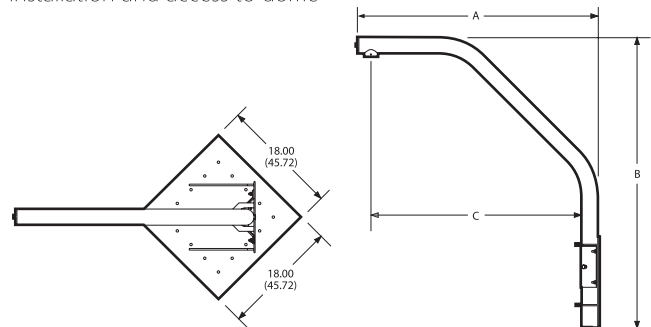
- Ceiling/pedestal mounting
- Supports up to 125 lb (56.62 kg)
- For use with medium- and heavy-duty pan/tilts
- Cable feedthrough holes (top and bottom)

- Wall mounting
- Supports up to 75 lb (34 kg); 150 lb (68 kg) when used with ST1 strut
- For use with medium- and heavy-duty pan/tilts or enclosures
- Cable feedthrough holes (top and end of arm); removable plastic cap on front end.



	A	B	C
RVSP350	25.50 (64.77)	35.08 (89.10)	20.42 (51.87)

- Aluminum construction
- Maximum load 45 pounds (20.41 kg)
- For use with small and medium outdoor pendant mount domes that use 1.5-inch NPT pipe
- Swivels for easy installation and access to dome



	A	B	C
RVSP351	25.50 (64.77)	35.27 (89.59)	20.42 (51.87)

NOTE: Values in parantheses are in centimeters; all others are inches.